

A

B

C

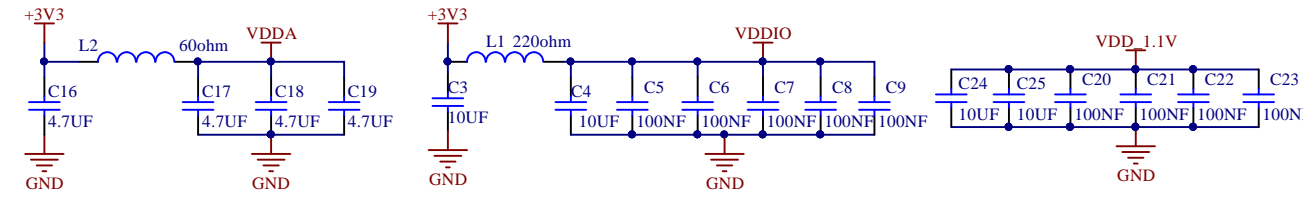
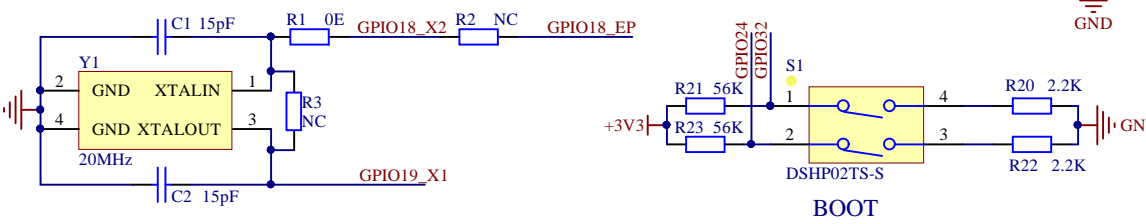
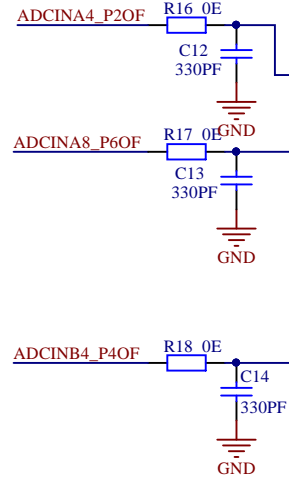
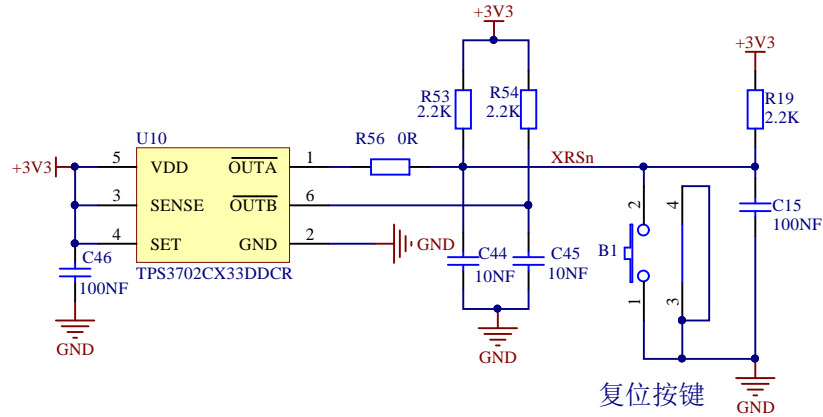
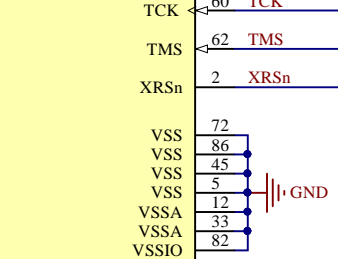
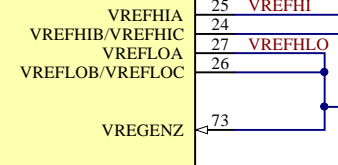
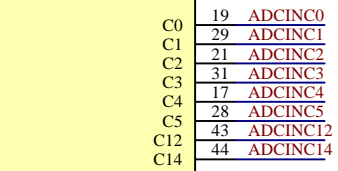
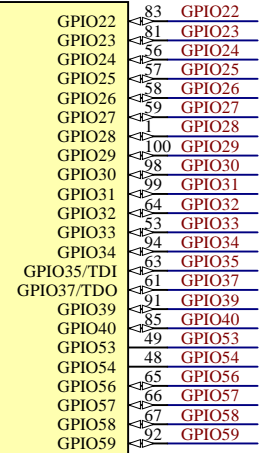
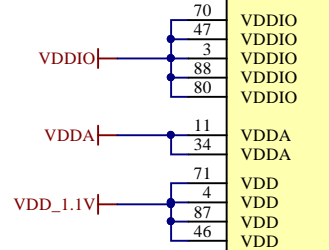
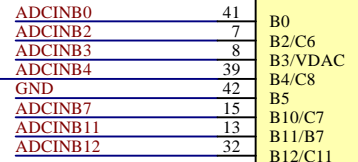
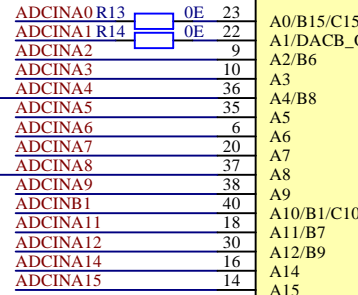
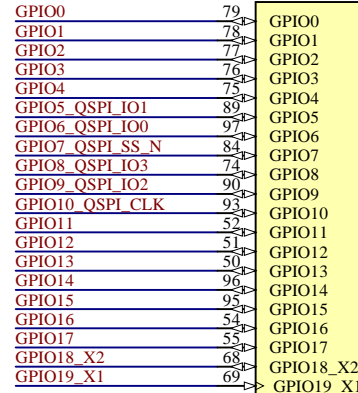
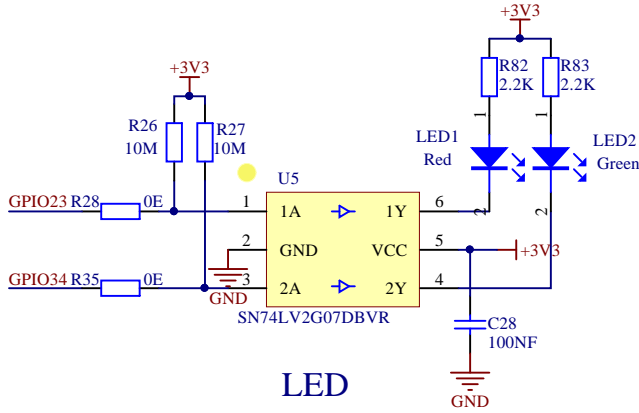
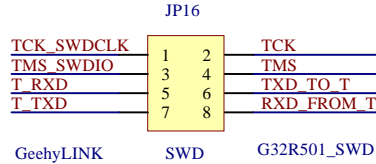
D

A

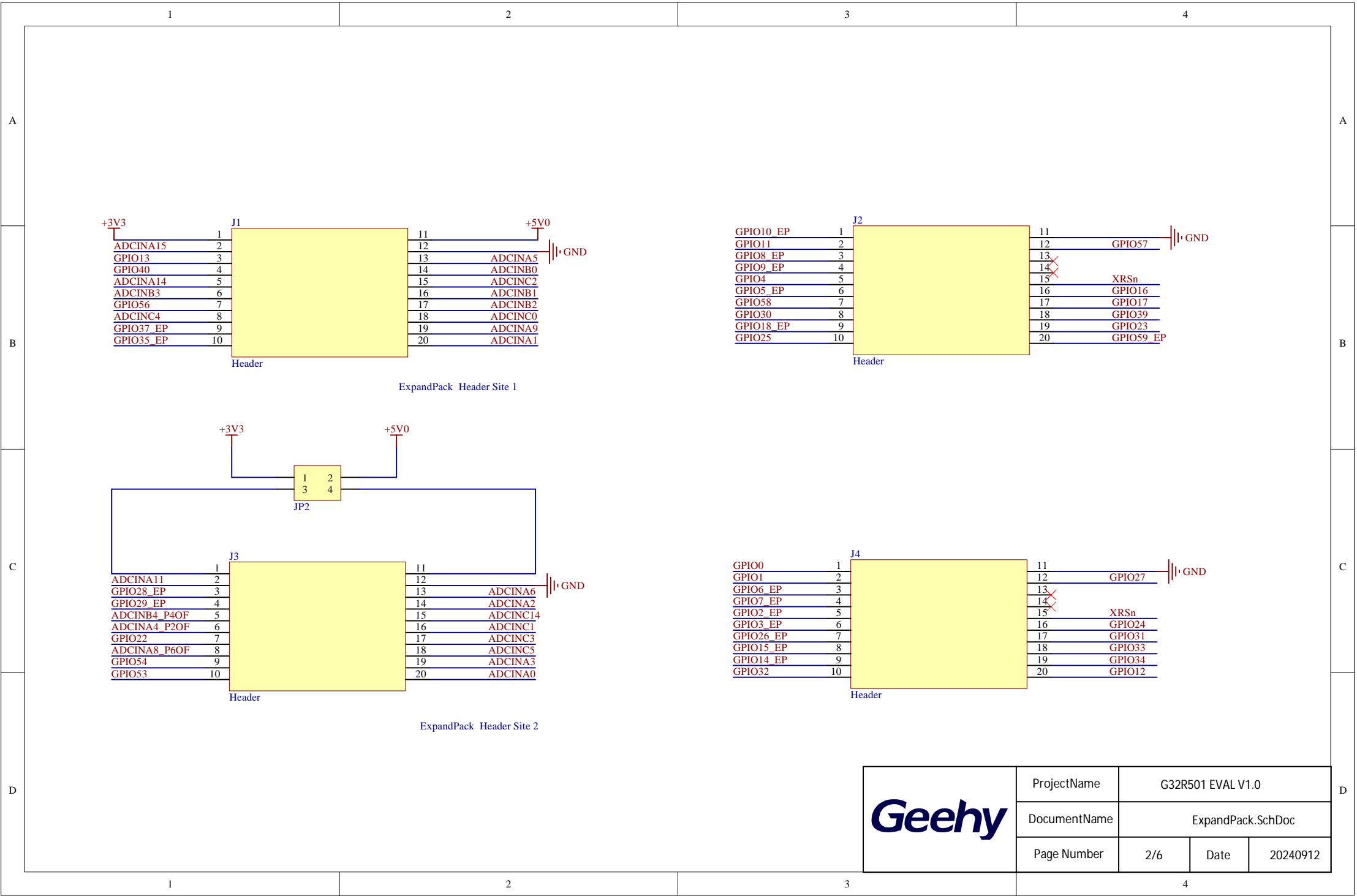
B

C

D

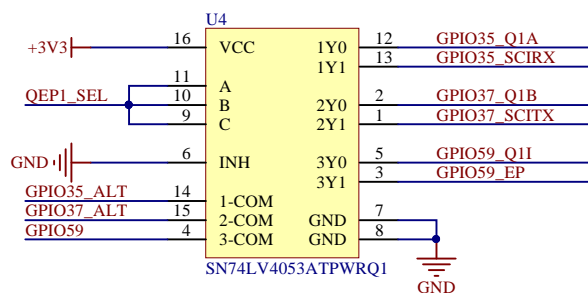
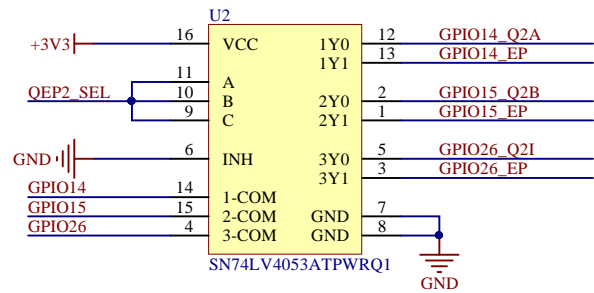


ProjectName	G32R501 EVAL V1.0		
DocumentName	Mcu.SchDoc		
Page Number	1/6	Date	20240912

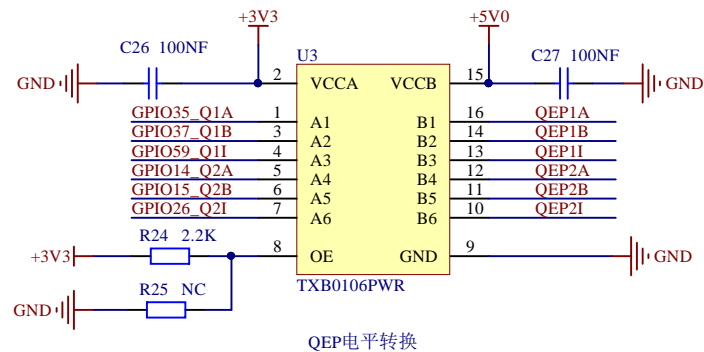


Geehy

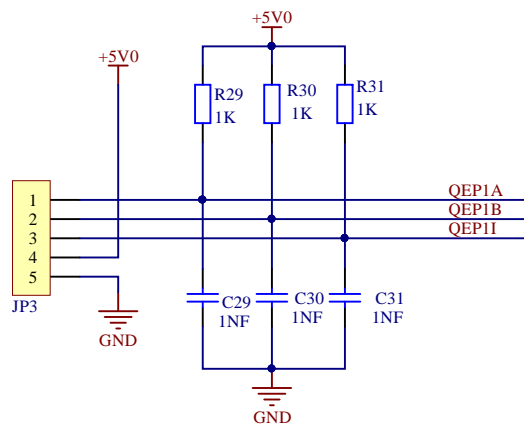
ProjectName	G32R501 EVAL V1.0		
DocumentName	ExpandPack.SchDoc		
Page Number	2/6	Date	20240912



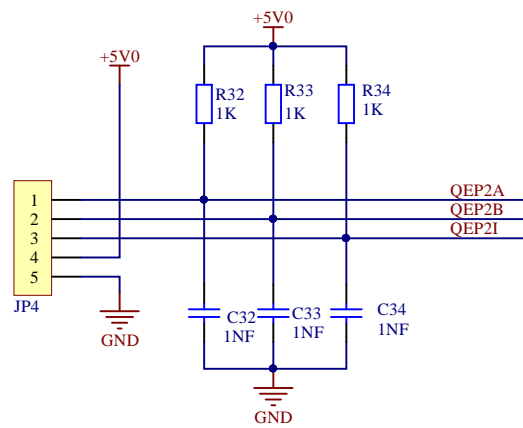
连接到QEP或者EP



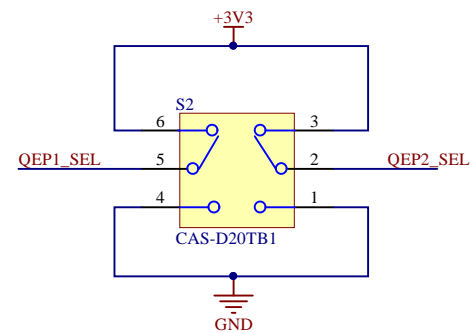
QEP电平转换



QEP1



QEP2



模拟开关片选信号

Geehy	ProjectName	G32R501 EVAL V1.0		
	DocumentName	QEP		
	Page Number	3/6	Date	20240912

1

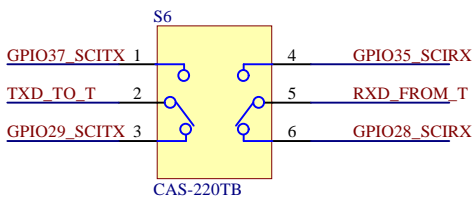
2

3

4



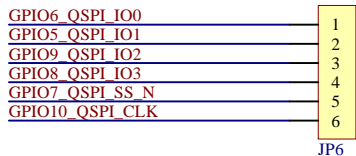
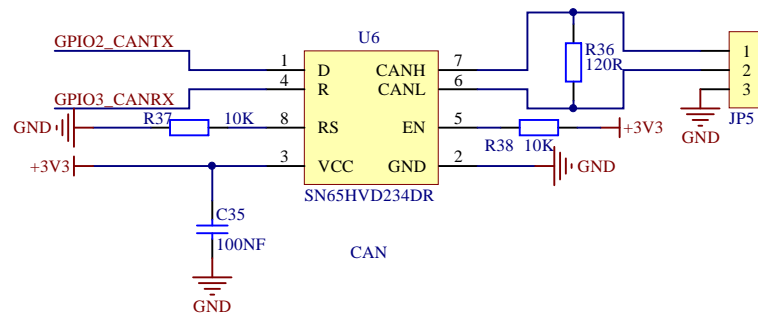
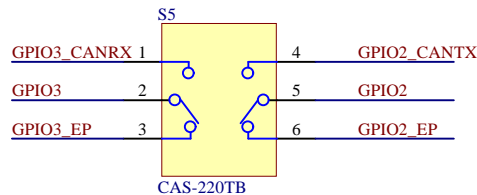
滑动开关



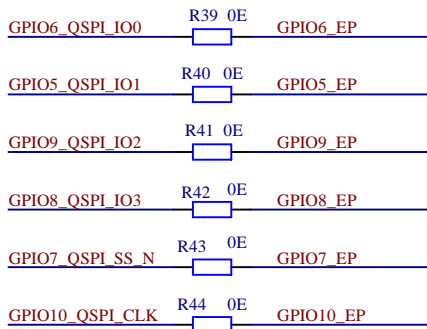
UART的IO选择

默认GPIO28和GPIO29做串口

UART



QSPI



Geehy

ProjectName	G32R501 EVAL V1.0		
DocumentName	UART&CAN&QSPI.SchDoc		
Page Number	4/6	Date	20240912

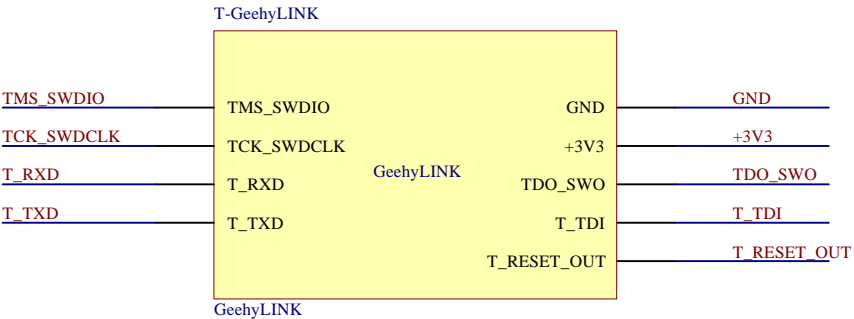
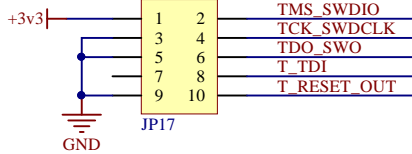
1

2

3

4

D



	ProjectName	G32R501 EVAL V1.0		
	DocumentName	GeehyLINK.SchDoc		
	Page Number	6/6	Date	20240912